

## In this issue...

LOCAL SCHOOL WORKING TOWARDS BEING WASTE-LESS

NEW ARTS AND ENTERTAINMENT SECTION

DISCOVER THE PONDS AT BROOKWOOD COUNTRY PARK

VOLUNTEERS NEEDED FOR THE 10th KNAPHILL VILLAGE SHOW

FREE FOOTBALL FOR ALL COACHING SESSIONS

Cover photo by Rebecca Ward, Editor

## Surrey Supply Teachers

A professional, friendly agency recruiting Primary and Secondary supply teachers, Nursery staff and Teaching Assistants to work for us in a variety of local schools.

Both full and part time work is available on a day to day and longer term basis. The work is flexible and you can work as much or as little as you like.

**01932 254261**

[contact@surreysupplyteachers.co.uk](mailto:contact@surreysupplyteachers.co.uk)

[www.surreysupplyteachers.co.uk](http://www.surreysupplyteachers.co.uk)







## CONVEYANCING AND PROBATE PRACTITIONERS

We offer the below services to our clients, conducted in a friendly, professional, supportive manner. We are excellent communicators using both technology and traditional standards of service to suit our clients.

### PROPERTY LAW SPECIALISTS

### SELLING AND/OR BUYING A PROPERTY

### REMORTGAGES

### TRANSFERS

### PROBATE

### WILLS

### DECLARATION OF TRUSTS

### LASTING POWERS OF ATTORNEY

### COMMISSIONERS FOR OATHS

Please telephone or email for a free estimate or for further information.

Business Hours:

9am to 5.30pm Monday to Friday

6 Anchor Crescent, Knaphill, Woking, Surrey GU21 2PD

T: 01483 485700 F: 01483 485701 E: [info@lyonsandcompany.co.uk](mailto:info@lyonsandcompany.co.uk)

Free parking



With over 150 years in caring for bereaved families, we understand the importance of choosing the final resting place for your loved one.

- Full burial and ashes plots
- Family, community and ethnic group plots
- Woodland and green plots
- Mausoleum for burial and ashes
- Memorial Chapel
- Peaceful and unique grade 1 historic park and garden setting



Brookwood Cemetery Glades House, Cemetery Pales, Brookwood Woking, Surrey GU24 0BL

01483 472222 | [info@brookwoodcemetery.com](mailto:info@brookwoodcemetery.com) | [www.brookwoodcemetery.com](http://www.brookwoodcemetery.com)

## Space to Work?



photo simulated furniture

## Rent a Desk!

from £50 per week

Fast WiFi & Free Parking

Call **01483 387 302**



**LANSBURY  
BUSINESS  
ESTATE**

Office Space **TO LET**

Lower Guildford Road, Knaphill

[www.lansbury.co.uk](http://www.lansbury.co.uk)

## Care and Support at Home

An award-winning family-owned and run business which was rated GOOD in all areas by the Care Quality Commission.

A friendly, flexible service with help available from ½ hour per week up to 24-hour live-in care.

Trustworthy, caring, professional staff, fully trained and with DBS clearance.

We can offer you support with: personal care, bathing, hair washing, physical therapy exercises, companionship, nursing care, simple cooking, shopping, medication management, ironing or light domestic duties and dog walking or care of pets.

We also periodically have vacancies for caring people to look after our clients.

Just a few hours a week can make a difference, so if you have some spare time why not earn some money – we pay from £10 - £12.50 per hour.



For further information, or to arrange a free no obligation meeting in your home, please call **01483 797950** or visit our website [www.astoragency.co.uk](http://www.astoragency.co.uk)

## The Team

EDITOR	Rebecca Ward
DEPUTY EDITOR	Sue Stocker
DESIGN & ARTWORK	Tim Burdett
ADVERTISING	Pauline Williams

Published by Knaphill Residents' Association

Printed by Knaphill Print Co. Ltd, Lower Guildford Road, Knaphill, Surrey GU21 2EG  
sales@knaphillprint.com

## ADVERTISE IN THIS MAGAZINE!

We have a circulation of 5,000 copies and a readership of ca15,000 that reaches throughout Knaphill and the surrounding villages on a quarterly basis in March, June, September and December.

Please submit articles for the next issue to Rebecca Ward at [editor@knaphill.org](mailto:editor@knaphill.org)

To promote your business, please get in touch via [pauline@knaphillprint.com](mailto:pauline@knaphillprint.com)

## Contact the KRA

By post: c/o Knaphill Post Office, 1-2 Anchor Crescent, Knaphill, Surrey GU21 2PD

By email: [news@knaphill.org](mailto:news@knaphill.org)

## Join us

Have you ever thought of giving some of your time to help out the KRA to make your home village even better? We'd love to have you on board and need your continued support to run projects, events and the annual village show.

## Support us

I/we hereby wish to join / renew\* membership with the Knaphill Residents' Association (\*tick or circle)

..... Household	£6.00pa
..... Retired	£3.00pa
..... Trade	£10.00pa

Title	Surname
Address:	
Post code:	
Tel:	
Email:	
Signed:	
Date:	

Cheques payable to Knaphill Residents' Association.

Please send your completed forms to: KRA Membership, c/o Knaphill Post Office, 1-2 Anchor Crescent, Knaphill, Surrey GU21 2PD



Please read & recycle

# Welcome to the Spring edition of myknaphill

Spring 2019 3



This is my first official post as the new Editor of your local magazine, myKnaphill. I'm excited to say that we've been working on a redesign and will be working hard to bring you relevant and interesting content each quarter. I'd love to hear what you'd like to see appear in the magazine, so email me at [editor@knaphill.org](mailto:editor@knaphill.org).

I've been a committee member of the Knaphill Residents' Association for about 18 months and anyone that knows me knows I can't resist getting involved in a project. One of the projects we are looking at implementing is a community speed watch. Many of the roads through the village have been highlighted as areas of concern for excessive speed. With a community speed watch we would like to make our roads and village safer.

I hope you enjoy this new-look Spring edition and look forward to hearing your feedback.

**Rebecca Ward**  
EDITOR



@knaphillcommunity

## Contents

### Our Community

- 4 Local school leads the way to a greener future  
Knaphill School look to reduce their impact on the environment
- 4 Library Opening Hours  
Check opening times and days before you visit
- 5 Flora, Fauna & Fish  
Discovering the ponds at Brookwood Country Park

### Arts & Entertainment

- 6 The Lightbox  
Women in Photography

### Property

- 8 Property Market Update  
Simon Stone, partner at Seymours Estate Agents discusses Brexit
- 8 Phil's Planning  
Find out the latest planning decisions with straight-talking Phil Stubbs

### Business

- 9 Sue Stocker takes a look at a few of the changes to businesses in Knaphill High Street

### My local...

- 10 Read our interview with local mum and business owner Annie Peters

### Football

- 11 Knaphill Athletic  
Find out about free football for all coaching sessions

**KNAPHILL Baptist Church**  
Caring Christians at the Heart of the Community

88 High Street - 01483 474083 - [www.KnaphillBaptist.org.uk](http://www.KnaphillBaptist.org.uk)

No responsibility for the quality of goods or services advertised in this magazine can be accepted by the publishers or printers. Advertisements and information is included in good faith. No part of this magazine may be reproduced in any form without the prior permission of the publishers. The publishers do not necessarily agree with the views expressed by contributors, nor do they accept any responsibility for errors in the subject matter of this magazine. All reasonable care is taken to ensure accuracy in the preparation of the magazine, but the publishers cannot be held legally responsible for the return of unsolicited manuscripts or artwork. Whilst every care is taken, no responsibility can be accepted for the safety of material submitted.



# Chairman's Report

## Spring 2019



Looking for a local tradesman, or are you yourself a plumber, electrician, painter or heating engineer? Please keep in touch with the Knaphill Community Facebook page where residents post requests for help and receive recommendations. I've hired two tradespeople from these recommendations and have been very pleased with the quality of their work at reasonable prices!

In the same vein, we're very pleased to announce that Sarah Squire, from Squires Garden Centre, will be our guest speaker at our KRA AGM on Wednesday 6 May at 7.30pm at Knaphill Baptist Church, High Street. The AGM is open to all residents, so please make a note in your calendar.

Advanced preparations have started in planning the annual Knaphill Village Show, which this year will be held on Saturday 20 July at Mizens Railway, Barrs Lane, from 1pm to 5pm. If you're interested in booking a stall, please visit [knaphill.org](http://knaphill.org) for details. Also, we'd be interested to hear from any resident, organisation or group who'd like to perform on the day – please email [chairman@knaphill.org](mailto:chairman@knaphill.org). We have music, dance areas and marquees where we can entertain during the course of the afternoon.

Very best wishes, **John Butler**

## Our Community

### Local School leads the way to a greener future



With the need for us all to consider our plastic usage and waste produced, Knaphill Federation of Schools are bringing about changes to reduce their impact on the environment, and teaching our children about reusing and recycling from an early age. With the help of local resident and committee member, Kate Kett, and the chair of the PTA, Samantha Tuck, the school have introduced new recycling points within the school and in our community. You can drop your crisp packets in to the collection point inside Knaphill News. Another common item for schools which produces a high volume of waste is writing implements. A collection point for bios,

highlighters, felt tips and white board markers has been set up within the school and also at Knaphill Library for the community to use. The PTA hosted a very successful Disco for the children to introduce them to the idea of reusable cups rather than individual bottles. Pick and Mix sweets were served in recyclable pretty red & white striped paper bags rather than the hundreds of sweet wrappers inevitably being thrown away. Crisp packets were also collected and will be sent off to be reused.

We feel this might be the tip of the iceberg for Knaphill Federation of Schools and look forward to hearing about more zero-waste initiatives in the future.

### Explore further with Knaphill Library

Whether you've booked your 2019 holiday or are in need of a little inspiration, browse the wide selection of travel books in Knaphill Library.

Contact Knaphill Library via email [knaphill.library@surreycc.gov.uk](mailto:knaphill.library@surreycc.gov.uk)



#### Library Opening Hours

Monday: 1pm - 5pm  
Tuesday: 10am - 1pm & 2pm - 5pm  
Wednesday: Closed  
Thursday: 10am - 1pm & 2pm - 5pm  
Friday: 10am - 1pm & 2pm - 5pm  
Saturday: 9.30am - 4pm  
Sunday: Closed

TRADING IN SURREY FOR OVER 50 YEARS

Buy online at [rsm domesticappliances.com](http://rsm domesticappliances.com)

# YOUR LOCAL DOMESTIC APPLIANCE SUPERSTORE

SALES • ADVICE • REPAIRS

**Fast, free local delivery.**  
**Visit our showroom today!**

WITH **euronics**  
**COMPETITIVE PRICES**



SUPPORT YOUR LOCAL SHOP!

# RSM

## Domestic Appliances

FRIENDLY SERVICE • BIG SAVINGS • FAST DELIVERY

GREAT OFFERS IN-STORE:

**High Street**  
**Knaphill, Woking**

**Call**

**01483 475000**

Also in Bookham and Ashted



My name is Roger Westcott and I'm Secretary of the Goldsworth Park Angling Club which, under licence with WBC, manages angling on Goldsworth Lake and the ponds at Brookwood Country Park.

Some of you may remember my article in the Knaphill magazine a couple of years ago introducing the then newly formed club. It's therefore about time I updated you on what has proved to be an exciting venture, not only from a fishing perspective but also the discovery of the abundance of wildlife both flora and fauna.

Pond number one nearest the car park by Knaphill Athletic FC ground is a wildlife pool,

so it's definitely "NO FISHING" on this one please! In 2017, we undertook some tree work and a general tidy-up on this pond, and it would be great if a local group of wildlife enthusiasts wanted to adopt this pond as an ongoing project. If you're interested, please get touch (see end of article).

On pond two, we've also done some tree work including reed and margin management and some fish stocking. This pretty pond with its iris beds and lily pads is very popular with our anglers, and noted for its great catches of carp, tench, bream and big roach. Weather permitting, further work on improvements to banks in the form of log platforms as fishing points should start soon, making the site more user-friendly.

Pond three was originally part of the hospital gardens and has sadly been neglected for many years, so will need a lot of money and hard work to bring it back to its former glory. This is perhaps something for the future, and in the meantime it will be left to its own devices... and the ducks! Again, this is a "NO FISHING" area.

Pond four has benefitted from a fair bit of improvement, as we've built six log platforms, raised the water level creating a bog area, planted lilies, removed a number of dead trees and fish stocked. This makes this pond very popular for general angling, and also for beginners to angling through our annual teaching programme, aptly

named Let's Go Fishing. This programme has proved to be the highlight of our calendar, as in 2018 we had over 90 people who took advantage of our free teaching days held throughout August.

For more details on this event or anything else related to our activities at Brookwood Country Park, please check our web site: [www.goldsworthparkanglingclub.com](http://www.goldsworthparkanglingclub.com) or call me on **07779 896393**.



## Allotment Space Available in Sheets Heath Lane

A limited number of plots are now available at the beautiful site at Sheets Heath in Brookwood. Should you be interested please contact the chairman or Secretary (details below) when we will be happy to provide further information and to arrange for you to view our plots.

Now is an excellent time to begin a new gardening interest and reap the health and wellbeing benefits of becoming an allotmentee.

[chairman@gpasbrookwood.co.uk](mailto:chairman@gpasbrookwood.co.uk)  
or **01483 474980**

[secretary@gpasbrookwood.co.uk](mailto:secretary@gpasbrookwood.co.uk)  
or **01483 762995**

Help make  
your 10<sup>th</sup>  
Knaphill Village  
Show one to  
remember!

We've started the exciting task of planning this year's Knaphill Village Show. To be held at Mizens Railway on Saturday 20 July, we'll be celebrating the 10th show in style with a vintage theme. We need your help though, whether you can spare some time on the day of the show or a few hours leading up to it to make sure it goes with a bang. Find out more by contacting us at [villageshow@knaphill.org](mailto:villageshow@knaphill.org).



**Harding  
Auto Services**

Your local family run business.  
Keeping your car on the road

**T: 01483 487 626**

**MOT - Service - Repairs**



Robin Hood Rd • Knaphill • Woking • GU21 2LX

Putting  
customer  
service first.



### All Parts & Labour Guaranteed

- Servicing to Manufacturers Standards
- MOTs – including Diesels
- Electronic Fault Diagnosis
- Brakes, Exhausts, Clutches & Tyres
- Diesel Powered Tuning
- ECU Remapping
- Air Conditioning Servicing
- **New Rolling Road**



[www.hardingautos.co.uk](http://www.hardingautos.co.uk)



## Arts & Entertainment

### The Lightbox

More than just a gallery

### Women in Photography

The exhibition will for the first time present an in-depth historical survey showcasing the achievements of female photographers working in Britain.

Professor Jean Wainwright (University for the Creative Arts) has compiled new and archival interviews, including those from a selection of exhibiting artists. This exhibition is supported by a Jonathan Ruffer Curatorial Research Grant from Art Fund.

**30 January to 2 June 2019**

**£5.00 Day Pass or £7.50 Annual Pass | Under 18s Free**



Based at The Winston Churchill School, Radio Woking airs a vast array of specialist programmes and features not heard on commercial or national radio, all with a real local flavour.

Radio Woking is about giving you an alternative to the mainstream. It's not trying to be something for everyone every minute of the day, it's about creating a station that relates to you. Hopefully many of their shows will pique your interest; browse their schedule at [www.radiowoking.co.uk](http://www.radiowoking.co.uk).

## Alan Greenwood & Sons

### *Independent Family Funeral Directors*



*We offer a Caring and Compassionate Service  
24 hours a day 365 days a year  
The latest Jaguar or Mercedes Funeral Vehicles  
Golden Charter Pre-paid Funeral Plans  
Home Visit Arrangements  
We will not be beaten on price*

*Please Visit Our Website for Full Details of Our Branches and Services  
and also to View All Our Local Obituaries*

[www.alangreenwoodfunerals.com](http://www.alangreenwoodfunerals.com)



# 01483 487 889

**1 Anchor Hill  
Knaphill  
GU21 2HL**

[knaphill@alangreenwoodfunerals.com](mailto:knaphill@alangreenwoodfunerals.com)

**OPEN SATURDAY MORNINGS 09.00-12.00**



A new play from an award-winning scriptwriter is coming to Woking.

**Burning the Witch** has been written by Christopher Reason, who writes scripts for EastEnders and has a host of other TV and radio credits to his name. The first two acts have been broadcast as individual plays on Radio 4 and performed by the Horsell Amateur Dramatic Society to great success at drama festivals in Woking and Spelthorne.

Reason has now written a third play, which forms the third act of the whole story. The first act draws from the radio play *This Repulsive Woman* and the second from *Every Child Matters*, which won the 2011 Sony Gold Award.

The first act involves an interview between Debbie Hurst (Claire Racklyeft) and her probation officer Tony (Duncan Partridge) after her trial for parading her partly clothed young daughter on the internet. Debbie, from "the wrong side of the tracks", has been vilified in the tabloid press as "the most repulsive woman in Britain".

As the conversation progresses, we learn that not is all as it might seem and the case might not turn out as expected.

The second act takes place six months after the trial and features Debbie's social worker Joanne who has taken the blame for the handling of the case and is seeking to understand what happened. More details of the facts behind the case are revealed.

The third act involves Joanne's boss Patti Dewhurst (Caroline Christie) meeting Chief Superintendent Geoffrey Kinkaid (Matt Kitsell) in a hotel room. Over the course of this gripping third act, loose ends are tied up leading to a dramatic climax.

*Burning the Witch* will be performed at the Rhoda McGaw Theatre from 2 to 4 May at 7.30pm. Tickets cost £15 (£13 for concessions) and can be bought at [www.horsellads.com](http://www.horsellads.com) or by calling 01483 808354.



## ST. JOHN'S FOOT CLINIC



### TIME TO WAVE GOODBYE TO VERRUCAE

**Introducing Swift – the breakthrough treatment  
for stubborn warts and verrucae**

Unlike cryotherapy, salicylic acid and laser, Swift does not break the surface of the skin and eliminates the need for bandages and dressings – leaving you to carry on your day as normal.

**Now available at St John's Foot Clinic.**

Give us a call for details on 01483 715771  
or email us at [info@stjohnsfootclinic.co.uk](mailto:info@stjohnsfootclinic.co.uk) for full details



[www.stjohnsfootclinic.co.uk](http://www.stjohnsfootclinic.co.uk)  
St John's Health Centre,  
Hermitage Road,  
St John's, Woking, GU21 8TD



## Boormans JEWELLERS AND QUALITY GIFTS

We are a family run jewellers  
in the centre of Knaphill village  
with 2 free car parks nearby.

We have a great range of JEWELLERY including:  
Gold, silver, precious stones, pearls, Chamilia bracelets  
and beads, jewellery with Swarovski elements  
and custom made jewellery.

We stock a range of traditional and contemporary  
CLOCKS AND WATCHES.

A huge range of QUALITY GIFTS for all occasions including:  
Crystal ornaments and vases, jewellery boxes, photo frames,  
christening gifts, Willow Tree, Lilliput Lane, Beswick ornaments,  
Disney, Star Wars & Marvel and much, much more.

We offer a full REPAIR SERVICE for  
jewellery, clocks, watches and barometers.

Jewellery repairs and remodelling,  
valuations, pearl restringing, ring re-sizing.

Service and repairs to mechanical and  
quartz clocks and watches.

Watch batteries and pressure testing, straps and  
bracelet adjustments while you wait for most brands  
including Tag Heuer, Ebel, Longines and Omega.



3 Broadway, Knaphill, GU21 2DR · Tel 01483 472939

Find us on [Facebook](https://www.facebook.com/BoormansJ) or [@BoormansJ](https://www.twitter.com/BoormansJ)

[BOORMANS.CO.UK](http://BOORMANS.CO.UK)





## Seymours' Market Update With Simon Stone

As we head into 2019, the topic everyone is talking about is of course Brexit! Much has been made about the impact that is being seen both on prices and transaction levels which, in all honesty has been nowhere near as dramatic as some would have you believe. From a local perspective, sensibly priced properties are selling well, particularly in Knaphill, as it is regarded as more affordable than other locations in Woking. Two/three-bedroom homes between £350,000 and £450,000 in good locations, close to good schools, have been particularly in demand with good prices being achieved.

As we look towards spring, we expect the market to remain stable and expect to see good demand enter the market as confidence begins to return. This is a good time to move as there is plenty

available across our three Woking offices and so we would welcome the opportunity to speak to anyone looking to buy and sell in the area.

Outside of selling houses, we look forward to being involved in various events throughout the year to raise money for the Sam Beare Hospice. We particularly enjoyed the Dragon Boat Race last year on Goldsworth Park Lake and will be entering two teams this year, so make sure you are ready to dig deep if we see you on the day! We're also looking forward to being involved and sponsoring the Knaphill Show on Saturday 20 July. It is always well supported and a great way to get the village together. Here's to a great 2019!

Simon Stone MNAEA, Partner, Seymours Estate Agents  
01483 798969 [www.seymours-estates.co.uk](http://www.seymours-estates.co.uk)

## Phil's Planning

### ■ THE MEADOWS

The Meadows was once a hospital owned by Surrey and Borders Partnership NHS Foundation Trust and is located on Bagshot Road (A322) just past The Nags Head Inn. The building was erected in 1996 and intended for patients from the old Brookwood Hospital. In its final format, it had 24 bedrooms plus several common rooms and a large kitchen. All the patients were removed from The Meadows in July 2013 and the building was boarded up but with minimum security.

Since its closure, it has been subject to many attacks of vandalism and recently has been a favourite site for fly-tipping. When I walked past last week, I noticed that all the window frames on the top floor had been removed, I presume unlawfully. In 2017, the KRA wrote to Surrey and Borders Partnership NHS Foundation Trust to complain about the state of the building and in reply they stated that Woking Borough Council had shown an interest in taking over the building but had

pulled out of a deal. Later, the building was put up for sale. Whether it has a new owner or not, we do not know.

It is criminal that bodies like the NHS, WBC and other agencies have allowed what was a fully functioning building to fall into dereliction. What a waste of public money and, given the shortage of facilities for patients with mental illnesses, a misguided decision to close the facility.

If you want to see more pictures of both the outside and inside of the building, then search Meadows Knaphill online then go to [derelictplaces.co.uk](http://derelictplaces.co.uk) where you will find several pictures. Be warned, some of the graffiti contains some rude words.

### ■ 1-3 HIGH STREET

WBC Planning Committee rejected an application to demolish the current building and, in its place, build a three-storey building comprising three retail units and eight self-contained one-bedroom flats. The main reason for refusing the application was not the saving of the current building, but the poor quality of the proposed new build given its location. Cllr. Whitehand also

raised concerns on parking given that the new building would only have eight parking bays, and that these would have to be shared with the new flat tenants, shop tenants and shop customers.

### ■ ENGLEFIELD ROAD

A planning application from Thamesway Development to build a terrace of four three-storey houses behind the Co-op was refused by WBC Planning Committee on the grounds that the proposed new houses were unduly cramped and contrived for a new development. Furthermore, the proposed dwellings, by reason of their overall height, mass, form, appearance and resulting relationship with Englefield Road, would visually dominate the area and fail to relate well to the surrounding buildings in the site's context. Thamesway appealed, but I am pleased to report that the Planning Inspector upheld the decision to refuse the application. At one stage in the process, agents for Thamesway suggested that the delivery trucks serving the Co-op could unload from the High Street and push their trollies of goods through the shop!

## Beat the Draughts...



**without the overdraft.**  
*Beautiful doors, windows and  
bi-folding doors with  
precision and care*

**Checkatrade**

**For a free, no obligation quotation  
please call today on 01483 474333**

**Unit 2, Robin Hood Works, Robin Hood Road, Knaphill,  
Woking, Surrey GU21 2LX Tel: 01483 474333 [www.windsorwindows.net](http://www.windsorwindows.net)**



**Windsor  
Windows**





Designs, your local, experienced "go to" Design & Build Specialists offering a partial or full bespoke service. Members of the Federation of Master Builders and with the Trust Mark Government Endorsed Standards Accreditation, our services can include Pre-Planning Meetings, Planning Advice, Planning Drawings and Building Regulations, Structural Services, Interior Design and Remodelling, Building Services, Extensions, Loft Conversions and Landscaping. Offering full project management throughout, we pride ourselves on working with our customers to achieve complete satisfaction.

Visit our offices at 32 High Street, Knaphill GU21 2PY, telephone 01252 411843 or e-mail us at [info@cedardesigns.co.uk](mailto:info@cedardesigns.co.uk).

## Welcome to Ernie's Coffee Corner!

Stef's Bakery has taken on a new identity, after a major refurbishment, as Ernie's Coffee Corner, now open for business under the capable and enthusiastic management of Joanna Grzymkowska. Joanna had worked for Starbucks for several years but always wanted to run her own café, so jumped at the chance to acquire the premises together with her husband Erno. The Ernie in question is their 18-month old son, shortly to be joined by a baby brother. Stef Trovato hasn't totally cut his ties with Knaphill though, as he can still be found lending a hand at Ernie's in the morning, and continuity is also assured by Gill Withers who has been working at the premises for 33 years, going right back to the days of "Homebake" which some residents might remember. Ernie's sells most of the foods that were available at Stef's, with some new additions, so why not pop in for a coffee or tea and a tasty bite and take home some of their delicious fresh bread.

Text by kind permission of Stuart Flitton of the News & Mail!  
Photo by Sue Stocker.



## High Level touch down in Knaphill

Specialist aerial photo company High Level Photography have moved to Knaphill's Lansbury Business Estate.

High Level Photography approached Lansbury's Director Mark Craven to discuss relocation from Fair Oaks Airport, the company's aircraft base near Chobham.

MD Ian Leslie explained High Level Photography deliver high-quality images at a range of heights, "from eye level to sky level", including mast, drone and aircraft.

Since 2007, High Level Photography have built up an impressive library of aerial photographs totalling over 6 million images from around the UK. Archiving and curation of this collection is a key part of their business, together with bespoke work on commercial property and construction sites.

High Level Photography stipulated excellent internet connectivity as a key requirement of the new office and multiple high-speed fibre broadband lines have been installed by several telecom providers.

Details of available office space on the Lansbury Business Estate can be found on its website [www.lansbury.co.uk](http://www.lansbury.co.uk), or you can call 01483 387 302 for more information.

## Knaphill News

Jay and Mita Patel, who live in Knaphill with their son and daughter, have been running Sarwals in Knaphill since 1998.

When the lease of their original shop located at no. 5 ended, and when no. 21 became free with the departure of Debra, the obvious solution was to move into there. The shop is now much lighter and the displays more visible, and they have double the space, so they have taken the opportunity to increase their range of products in every section.

They have received a lot of positive feedback from customers, both about the greater product range and the shopfront itself, which has definitely improved the street scene, and as they now have a more central location in the village Jay also decided to rename the shop Knaphill News to underline his commitment to being a real "village shop"!



*"I decided to turn my hobby into a business to fit around family life"*

## LOCAL MUM AND BUSINESS OWNER ANNIE PETERS TELLS US ABOUT HER STUNNING ICED BISCUITS



I have lived in the area for 8 years, I really like the community feel of the area. I studied food science at Reading University and worked in the food industry up until having my first daughter Amelia. After having both children and settling in Woking I decided to start a new hobby of icing and decorating homemade biscuits. I have always loved to bake and enjoy being creative. After being asked to make them for friends' and

family's weddings and other occasions, I decided to turn my hobby into a business to fit around family life. I named my business after my two daughters, Amelia (Mills) and Anabelle (Belles). 6 years later I am still enjoying creating new designs, and providing a product to my customers' exact specification and dietary requirements.

The hardest thing about running a business from home alongside family life, is getting the right balance between working hours and being a mum and wife! Sometimes it feels like a juggling act, and it's hard to keep everybody happy all of the time!

The best thing about running my own business is the flexibility it gives me to be able to work as well as being a hands on mum.

I would say to anybody thinking of starting their own business that it's a huge commitment, but it's incredibly rewarding to have something that you have created from scratch and I have never been as passionate about a job as I am now!

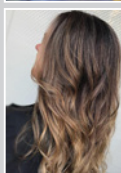
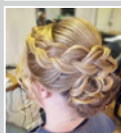
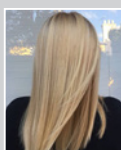
The advice I would like to pass on to my daughters would be, 'always be passionate about whatever you do and always strive to do your best in everything'.

You can find Annie on facebook @MillsandBelles and Instagram millsandbelles. Contact Annie via email Millsandbelles@gmail.com



Are you ready for a new experience?  
Then look into Valerie French

- Over 35 years of experience
- Current regular training
- Free Consultations
- 5\* Rating Good Salon Guide
- Hair & make up specialists for all occasions
- Unisex hair cutting
- L'Oreal hair treatments
- L'Oreal and TIGI products
- Special Offers
- Heating/Air con



t: 01483 767214

valeriefrenchhairsalon@gmail.com

Good Salon Guide

7 Anchor Crescent, Knaphill, Woking, GU21 2PD



20% off colour to all new clients on a Tuesday

Senior and student discount 10% off

£10.00 off with our new senior stylist

\*Please bring this advert with you to take advantage of the offers above

## St John's Knaphill Children's Centre, Victoria Road

Our vision is that all children will shine.



We are here to support all local families to give 0 to 5-year-olds the best start in life.

Come along and visit us for FREE

Play & learn sessions - child development information -  
parenting support - school readiness - courses for adults -  
healthy lifestyles - budgeting and much more

www.stjohnsknaphillchildrenscentre.co.uk

Tel 01483 476450

SureStart





The club are delighted to announce that they'll be holding their "Free Football for All" coaching sessions again this year at The Vyne, so please keep an eye on social media for details. Here, two of the managers who joined us as a result give an update on how they're getting on with their newly formed teams:

**MARK MIDDLETON****Knaphill Athletic U7 Incredibles**

After successful taster sessions held by the club over the summer, nine boys and girls aged six took the plunge and registered for the season. Knaphill Athletic Under 7 Incredibles joined the Surrey Primary League and play matches every Sunday during term time. In this age group, the emphasis is on participation, fun and respect, the club philosophy being that all players get equal playing time regardless of ability. Training sessions are held every Saturday morning and the team welcomes anyone who wants to try football out. The picture shows the team at their first home match at The Vyne on Remembrance Sunday.

Knaphill Athletic Under 8 Sharks were formed over the summer. We have a squad of 11 local players that we rotate on a weekly basis playing in 5-a-side games that are 40 minutes in length. The team trains on Saturdays with matches played on Sundays. The emphasis is on participation and improving your football skills rather than on winning but even so, the team has done remarkably well and has won a number of games including their very first one back in October. One particular player, Daniel Leigh, has been on a goal-scoring rampage, scoring in every game and netting 29 of the team's 42 goals. We're also very proud to have in our squad Tille Crowe, one of the few girls participating in the League, who is our second top goal scorer. Parents have been great in supporting the team, from helping to get the goals out to volunteering to referee the home games. There's a great family atmosphere, the kids have bonded well and there's a fantastic team spirit.

**SENIOR TEAM NEWS**

The firsts have had a three-month period with no League games as they competed in three Cup competitions. An early League Cup exit was followed by a defeat on penalties in the County Cup, but an Invitation Cup quarter-final keeps the run going as Jake Bellmaine moved to the top of the scoring charts with 15 goals in nine games. The reserves are also holding their own in the League with a League Cup semi-final to look forward to as well.



The club are always looking for players for all age groups, as well as anybody who would be interested at a role at the club or any potential sponsors, so please get in touch.

W: [www.kafc.co.uk](http://www.kafc.co.uk)

E: [info@knaphillathletic.co.uk](mailto:info@knaphillathletic.co.uk)

T: @KnaphillAFC

F: [fb.com/knaphillathletic](https://www.facebook.com/knaphillathletic)

## Plan Now & Save with our pre-paid funeral plan

**Your Benefits**

- Peace of mind for you and your family
- Security for your money
- Guarantees Funeral Director costs at today's prices

**£500  
discount**

until 31 Aug 2019

With £500 discount until 31 August 2019, now's the time to buy a plan and stop funeral costs outpacing inflation and savings.

**You can visit or call to ask about our plans.**

8 Anchor Crescent, Knaphill GU21 2PD,  
119-121 Goldsworth Road, Woking GU21 6LR.  
Or, purchase your plan at [choiceplan.co.uk](http://choiceplan.co.uk)  
and enter code **WK500**



**Woking**  
Funeral Service

Woking **01483 772 266**  
Knaphill **01483 397 998**





WOKING



WORPLESTON



Andrew White | PARTNER



Simon Stone | PARTNER



BURPHAM



HORSELL



## Spring 2019 Update

For those of you who maybe thinking of moving in 2019 I am pleased to report the market has started well. January saw good levels of sales agreed across all price ranges in the village particularly between £300,000 and £450,000. Another price range which performed well was £600,000 to £700,000 with detached family home back in demand. We understand many maybe slightly anxious as Brexit has been casting a shadow over the market for some time now. I would however encourage anyone thinking of moving to talk to us. Many are seeing the opportunity of more sensible pricing as a good reason to move. As Knaphills leading agent, we would be delighted to speak with anyone thinking of selling and explain what is really going on in the market. Please call either of the resident partners, Simon or Andrew and we can arrange a free no obligation valuation of your home.

### Knaphill Office

25 High Street, Knaphill, Surrey, GU21 2PP

t: 01483 798969

e: [andrew@seymours-knaphill.co.uk](mailto:andrew@seymours-knaphill.co.uk)

e: [simon@seymours-knaphill.co.uk](mailto:simon@seymours-knaphill.co.uk)

[www.seymours-estates.co.uk](http://www.seymours-estates.co.uk)



**SEYMOURS**  
INDEPENDENT  
ESTATE AGENTS